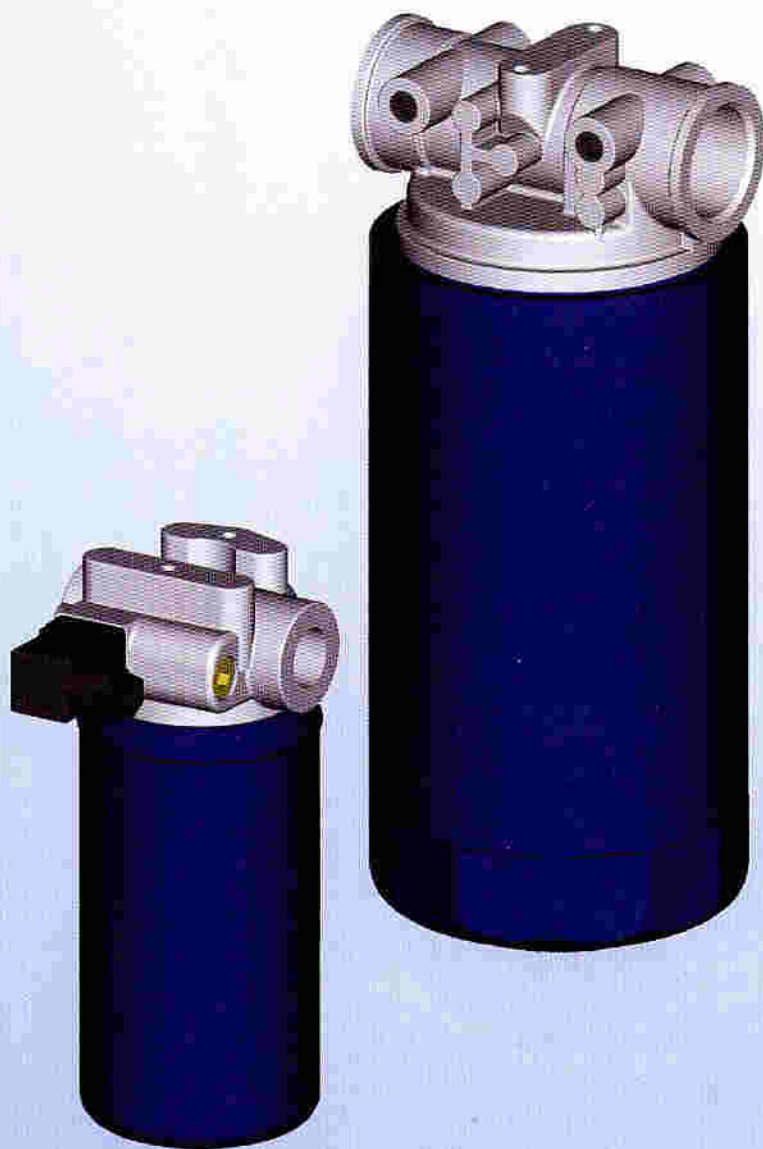




Industrial Filters · Accumulators

Spin On Filters

7 SLS ..., 7 SL ...
50 SL ..., 50 SLD ...



Filters for inline installation

*7 SLD ..., 50 SLD ...
Duplex filters for continuous
operation*

Optimised for mobile hydraulics

*Installation in the suction,
pressure and return line possible*

*7 SLS design with return flow
blockage, patented and
environmental friendly*

*Optimized flow characteristics
by 3D - computer aided design*

Low pressure drop

*Special high efficient
filter media*

Operating pressure: 7, 25, 50 bar

Connection up to SAE 1 1/2"



Quality assured!

Spin - On Filters

7 SL 30-260; 7 SLS 90-260;
25 SL 60; 50 SL 30 (D) - 80 (D);
7 SLD 30-60; 25 SLD 60;
50 SLD 30 (D)-80 (D)

Operating Pressure 7; 25; 50 bar
Operating Temperature -10°C bis 100°C
Connection up to SAE $1\frac{1}{2}''$

Application

Filtration of pressurised liquids and lubricants.
Filtration of liquids and gases.
Direct installation in pipelines.
Direct wear protection
of subsequent components and systems.
Optimised design for mobile hydraulics.
Continuous operation through duplex design
of types 7 SLD..., 25 SLD and 50 SLD....

Design

Filter head with inlet, outlet and locator for
one or two spin-on elements.
The filter element itself is integrated inside
the spin-on element.
Material: as per spare parts list in this brochure.
7 SLS: patented design with return flow blockage
valve inside filter head for leakage free element
service.
7 SLD..., 50 SLD...: Duplex filters with change-
over valve inside filter head and one spin-on
element on each side.

Spin-On Element

Spin-on element includes filter element
in pleated design with optimised pleat density
and various filter media. The filter element is
the most important component of the filter in
view of prolonged life and wear protection of
the system.
Oil cleanliness, the initial pressure drop and
the dirt holding capacity are the most impor-
tant criteria for selection.
For further detailed information please refer
our „Filter Elements“ brochure.
A proper filter selection is enabled by our
"EPE-FILTERSELECT" software.

Accessories

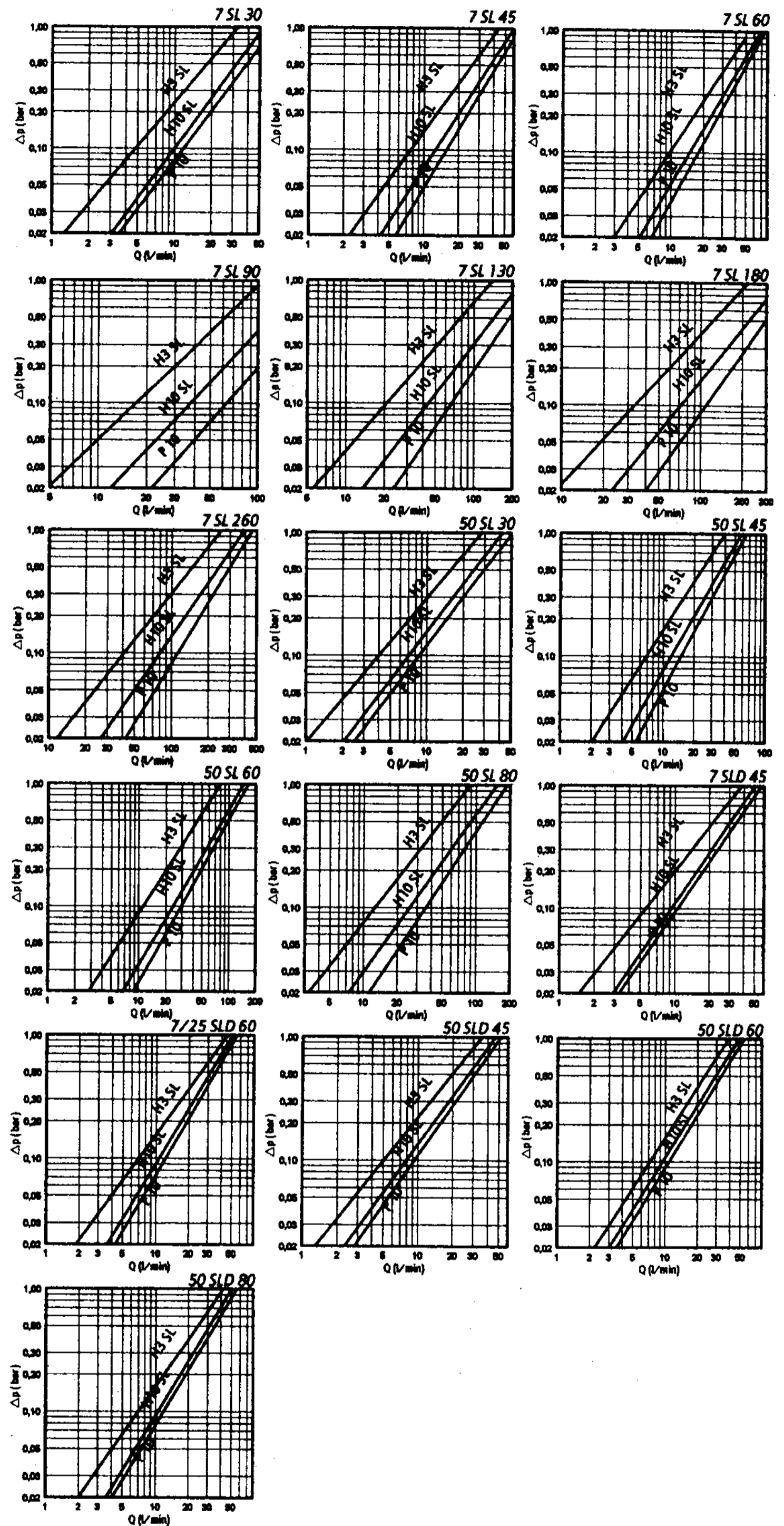
Maintenance Indicators

For monitoring the filter element's contamination
status, visual and visual/electrical indicators,
with one or two switching points are available.

Bypass Valve

To protect the spin-on element during start up
and over pressurisation due to clogging.

Performance Characteristics Oil viscosity: $30\text{ mm}^2/\text{s}$
Pressure drop curves for filter assembly Specific weight: $< 0.9\text{ kg/dm}^3$
Recommended initial Δp for selection = 0.5 bar



Ordering Information

Selection of filter size:
using computer program
"EPE-FILTERSELECT" or
performance characteristics
in this catalog.

Filter Type SL = suction and pressure spin on filters SLS = suction and pressure spin on filters with return flow blockage SLD = duplex spin on filters for suction and pressure lines	Magnet 0 = without	Maintenance Indicator 0 = without A = pressure gauge 0-6 bar C = vacuum meter -1 up to 0,6 bar D = visual/mechanical indicator F0.2 = vacuum switch, normally closed G0.2 = vacuum switch, normally open H1.5 = pressure switch, normally closed J1.5 = pressure switch, normally open P1.5 = combined visual/electrical indicator with electric plug (SLD without P...)	Connection Inlet RO = pipe thread SO = SAE flange LO = NPTF thread Outlet RO = pipe thread SO = SAE flange LO = NPTF thread	Material 0 = standard
--	------------------------------	--	--	---------------------------------

Filter Assembly → 7 SL 45/21 P10 S 00 - 0 0 H1.5 - RO P 0 0
 Seal Kit → D 7 SL 45/21 00 H - RO P 0

Pressure 7 bar, 25 bar, 50 bar	Nominal Size 7 SL and 7 SLD, 30/20, 30/21, 45/20, 45/21, 60/20, 60/21, 90, 130, 180, 260 7 SLS 90, 130, 180, 260 50 SL and 50 SLD 30, 30D, 45, 45D, 60, 60D, 80D 25 SL and 25 SLD 60/20	Filtration Grade Nominal filtration grade in µm VS = nonwoven media, not cleanable VS25 VS40 VS60 P = paper, not cleanable P5 P10 P25 Absolute filtration grade (ISO 4572) in µm H-SL = micro glasfibre, not cleanable H1SL H3SL H6SL H10SL H20SL AS = micro glasfibre, water absorbing not cleanable AS1 AS3 AS6 AS10 AS20	Diff. Pressure Maximum allowable pressure drop across the filter element S = standard	Element Design 0... = standard adhesive t = 100°C E... = special adhesive t = 160°C ...0 = standard material	Bypass Valve 0 = without 1 = 0.3 bar 4 = 2.0 bar	Seal P = Buna N V = Viton E = Ethylene-Propylene N = Neoprene	Additional Information 0 = without 5 = silicon free R = non return valve in filter outlet, only for type SLS (only without bypass valve) Z = inspection certificate 5 = silicon free Z = inspection certificate
--	---	--	--	--	--	--	--

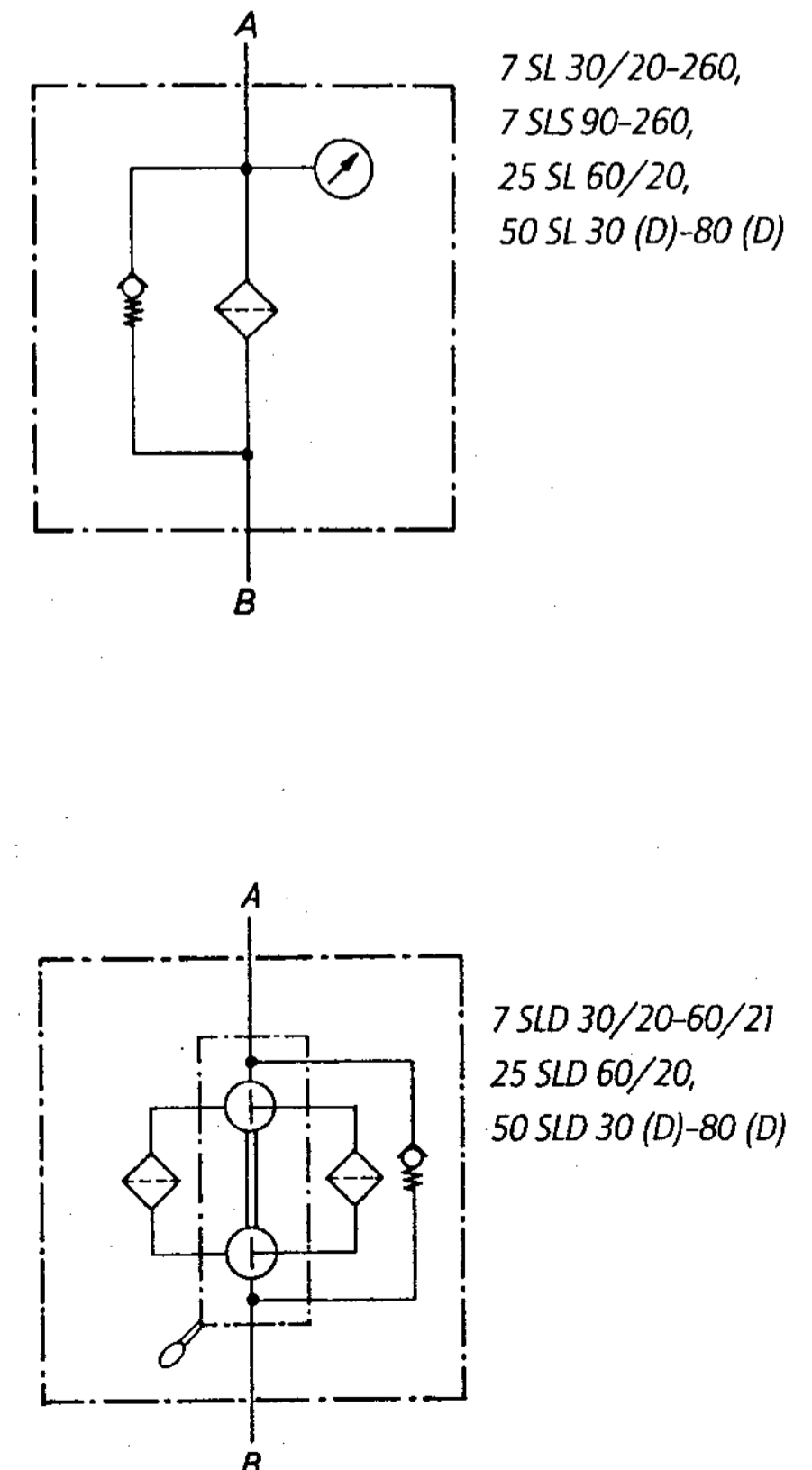
Spin-on Element → 80 45/21 P10 S 00 0 - P

Maintenance Indicator

Maintenance indicators are used for monitoring the filter element's contamination status. They are available as visual or visual/electrical indicators. For technical data refer our brochure "Maintenance indicators".

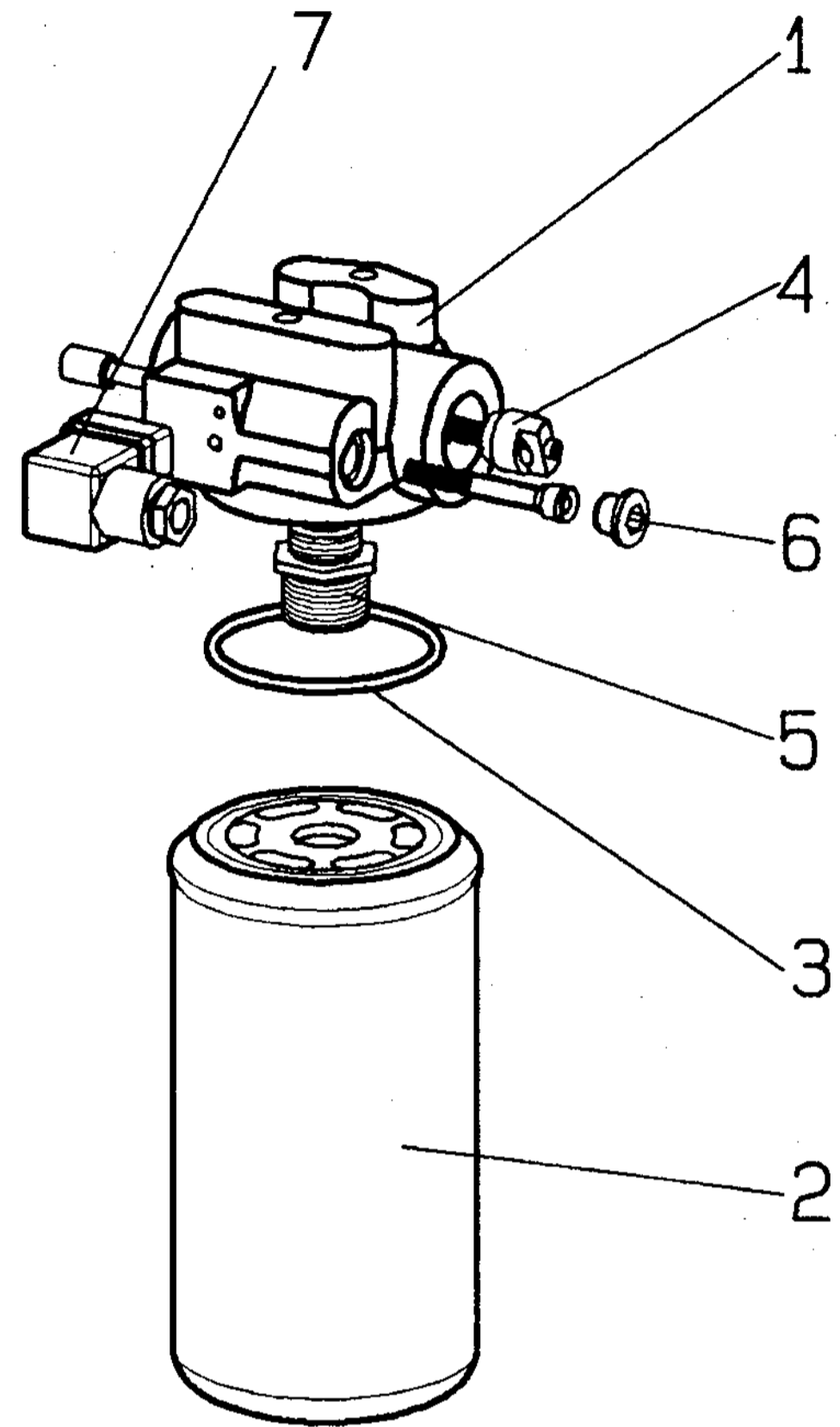
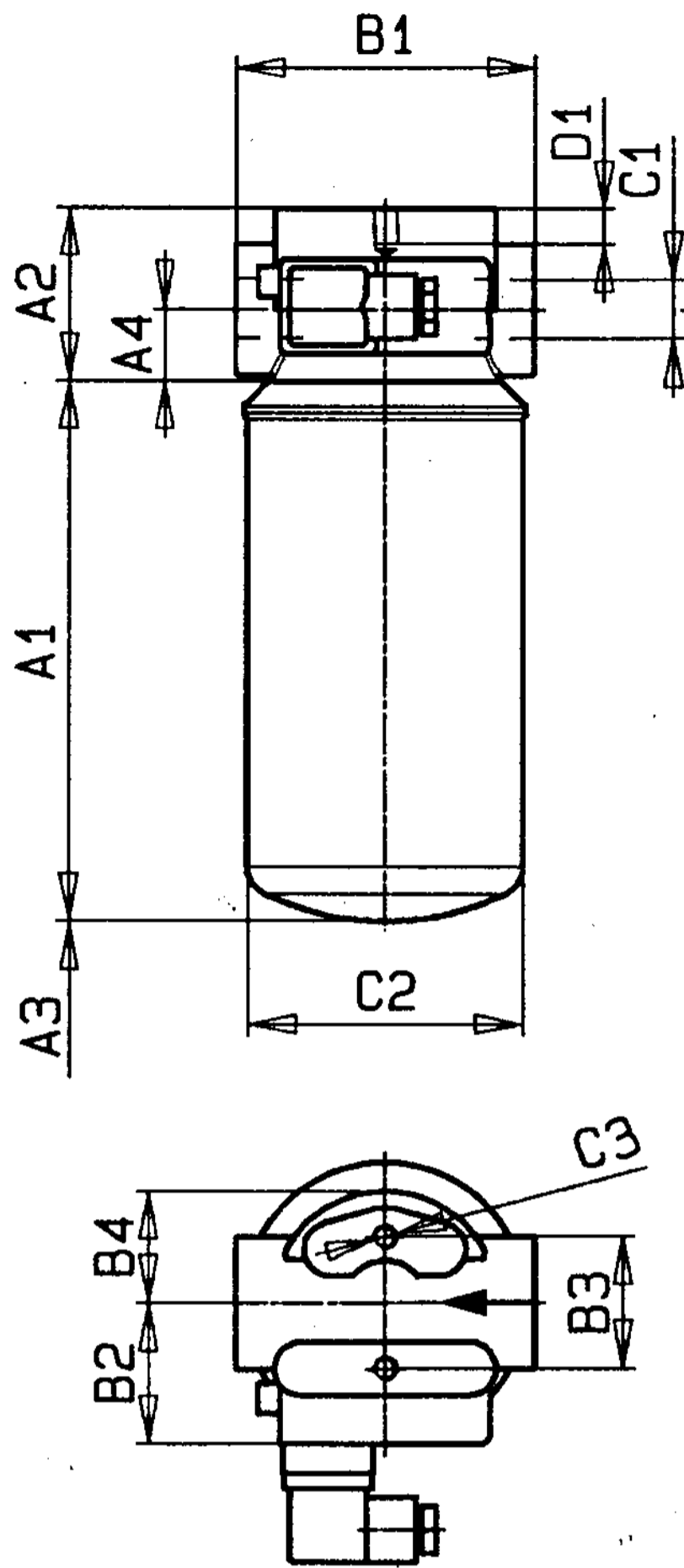
A...visual ordering information A = M 010	C...visual ordering information C = M 070	D...visual/mechanical ordering information D = P 1.5
F... electrical, normally closed G... electrical, normally open ordering information F 0.2 = I 0,2 HS 32 OOP* G 0.2 = I 0,2 HA 32 OOP*	H... electrical, normally closed J... electrical, normally open ordering information H 1,5 = H 1.5 HS 32 OOP* J 1,5 = H 1.5 HA 32 OOP*	P... visual/electrical with electrical plug ordering information P 1.5 = F 1.5 GW 02 OOP*
switching symbol	switching symbol	switching symbol

Filter Switching Symbol



*P = Buna N; V = Viton, E = Ethylene-Propylene, N = Neoprene also possible

Dimensions



Type	Volume in ltrs	Weight in kg ¹⁾	A1	A2	A3 ²⁾	A4	B1	B2	B3	C1	C2	C3	D1	spin on filter connection
25 SL 60/20	1.4	1.3	210	59	20	25	100	47	44	G 1/4	ø 96	M8	12	UNF 1"-12
50 SL 30	0.6	1.1	113							G 3/4	ø 92			UNF 1 3/8"-12
50 SL 30 D														
50 SL 45 D	0.9	1.3	149							G 1	ø 92			UNF 1"-12
50 SL 45														
50 SL 60	1.3	1.4	215								ø 92			UNF 1 3/8"-12
50 SL 60 D														
50 SL 80 D	1.5	1.5	240											

¹⁾ = weight including standard spin-on filter element and maintenance indicator

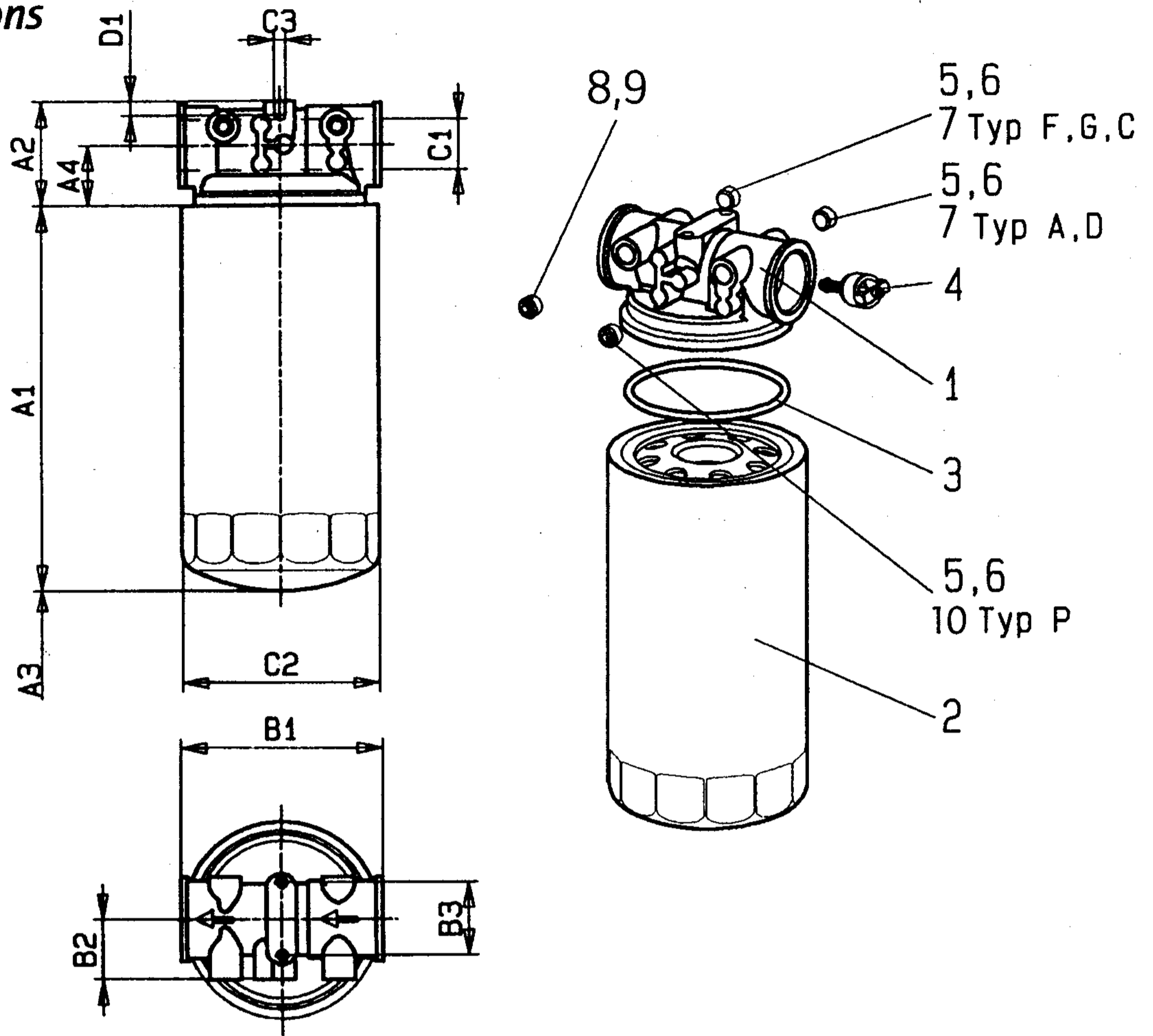
²⁾ = servicing height for spin on filter

Spare parts

		Size	25 SL 60/20	50 SL 30	50 SL 45	50 SL 60	50 SL 80 D
				50 SL 30 D	50 SL 45 D	50 SL 60 D	
Part	Quantity	Designation	Material				
1	1	Filter head with integrated maintenance indicator	various	please indicate ordering information "Filter Assembly"			
2	1	Spin-on element	various	please indicate ordering information "Spin-On Element"			
3	1	O-ring	Buna-N/Viton	please indicate ordering information "Seal Kit"			
4	1	Bypass valve*	various	Part No. 3046			
5	1	Fitting	Steel	Part No. 3285	Part No. 3285	Part No. 3285	Part No. 3287
				Part No. 3287	Part No. 3287	Part No. 3287	
6	1	Plug	A4	Part No. 771			
7	1	Electric plug, complete	various	Part No. 3260 and 3243			

* Please indicate opening pressure

Dimensions



Type	Volume in ltrs	Weight in kg ¹⁾	A1	A2	A3 ²⁾	A4	B1	B2	B3	C1 Connection	C2	C3	D1	spin on filter connection
7 SL 30/20	0.5	0.8	95											UNF 3/4"-16
7 SL 30/21														G 3/4
7 SL 45/20	0.5	0.9	146	41		20	95	-	38	G 3/4	ø 92		15	UNF 3/4"-16
7 SL 45/21														G 3/4
7 SL 60/20	1.2	1.1	205		15							M 8		UNF 1"-12
7 SL 60/21														G 3/4
7 SL 90	2.0	1.6	183	68		40	133	40	48	G 1 1/4	ø 128		16	G 1 1/4
7 SL 130	2.7	1.9	231											39
7 SLS 90	2.0	1.8	183											
7 SLS 130	2.7	2.1	231											

¹⁾ = weight including standard spin-on filter element and maintenance indicator

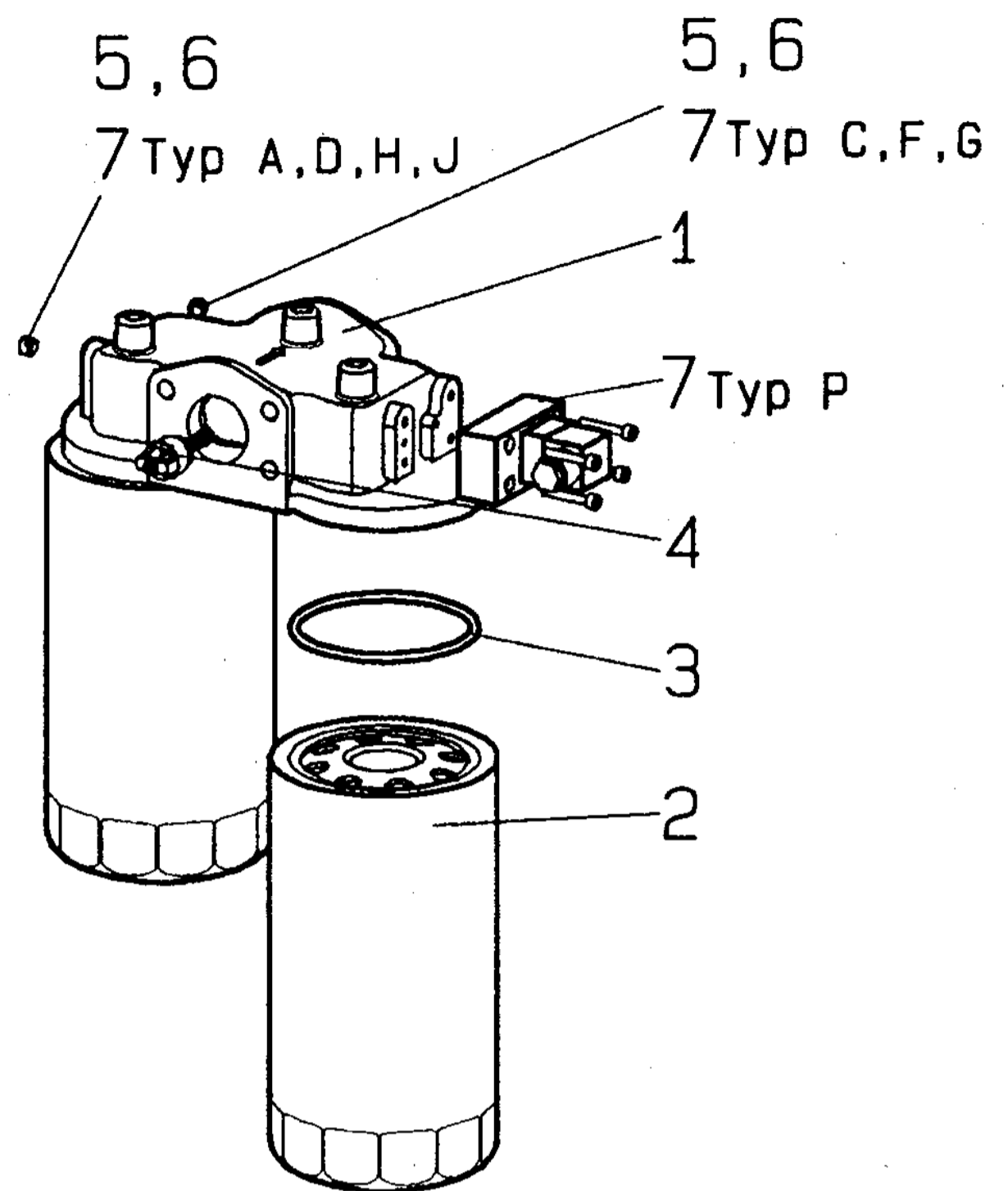
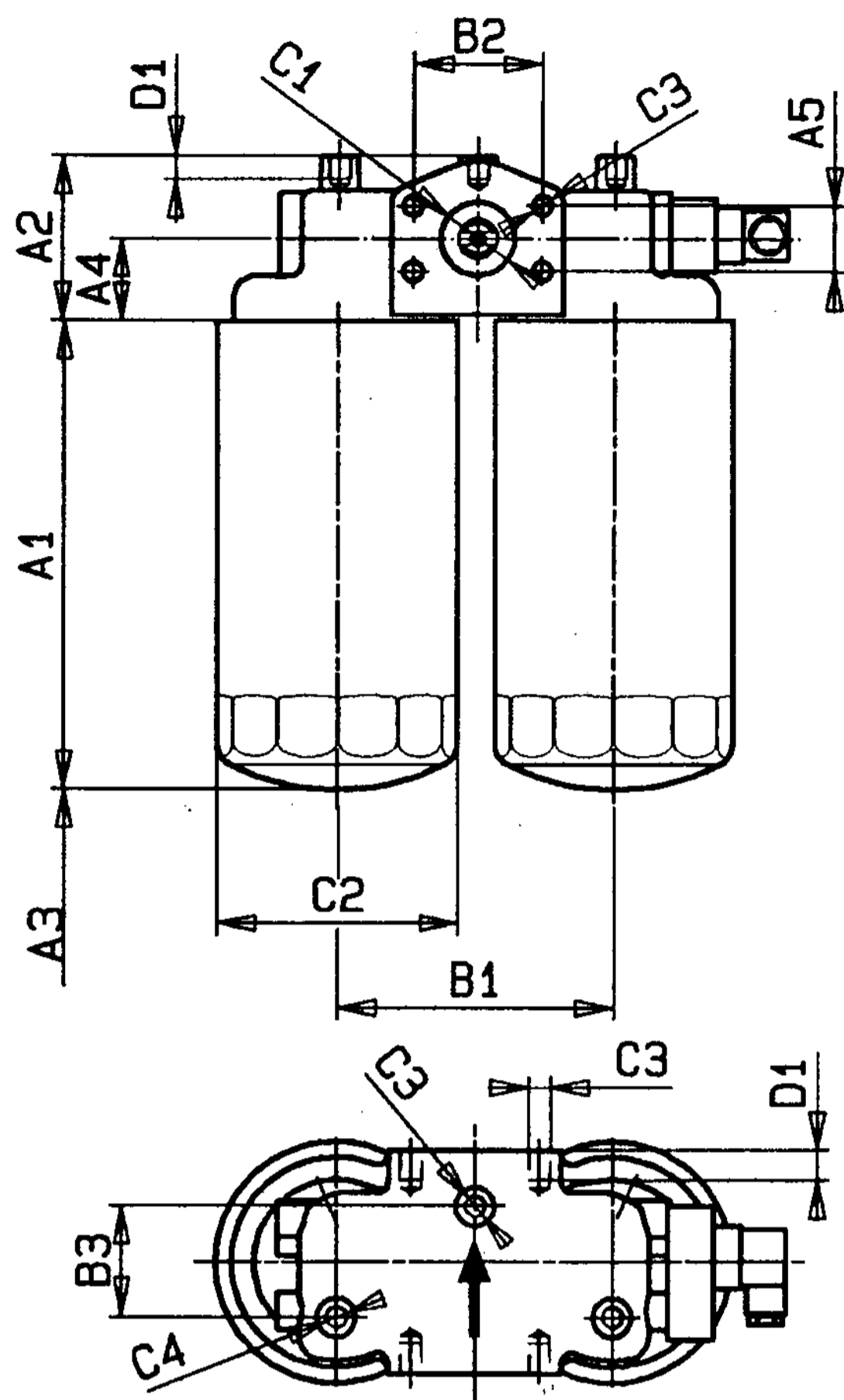
²⁾ = servicing height for spin-on filter

Spare Parts

		Size		7 SL 30/20	7 SL 45/20	7 SL 60/20	7 SL 90	7 SL 130	7 SLS 90	7 SLS 130
				7 SL 30/21	7 SL 45/21	7 SL 60/21				
Part	Quantity	Designation	Material							
1	1	Filter head	Al Si 12	please indicate ordering information "Filter Assembly", incl. return flow blockage valve						
2	1	Spin-on element	various	please indicate ordering information "Spin-On Element"						
3	1	O-ring	Buna- N/Viton	please indicate ordering information "Seal Kit"						
4	1	Bypass valve*	various	Part No. 3046		Part No. 3049		Part No. 3049 (on demand)		
5	2	Plug	5.8	Part No. 3187						
6	2	Sealing ring	Soft iron	please indicate ordering information "Seal Kit"						
7	1	Maintenance indicator	various	type P, refer to ordering instruction "Maintenance Indicator"						
8	3	Plug	5.8	Part No. 3187						
9	3	Sealing ring	Soft iron	please indicate ordering information "Seal Kit"						
10	1	Maintenance indicator	various	type A, C, D, F, G, refer to ordering instruction "Maintenance Indicator"						
10.1	1	Reduction	Steel	Part No. 5309 (for type A, D)						

* Please indicate opening pressure

Dimensions



Type	Volume in ltrs	Weight in kg ¹⁾	A1	A2	A3 ²⁾	A4	A5	B1	B2	B3	C1	C2	C3	D1	Spin-On Filter Connection
7 SL 180	2.0	3.0	183	90	20	45	35.7	150	69.9	60	G 1 1/2	ø 128	M 12	15	G 1 1/4"
7 SL 260	2.7	3.2	231												
7 SLS 180	2.0	3.3	183	85		40									M 42x2
7 SLS 260	2.7	3.6	231												

¹⁾ = weight including standard spin-on filter element and maintenance indicator

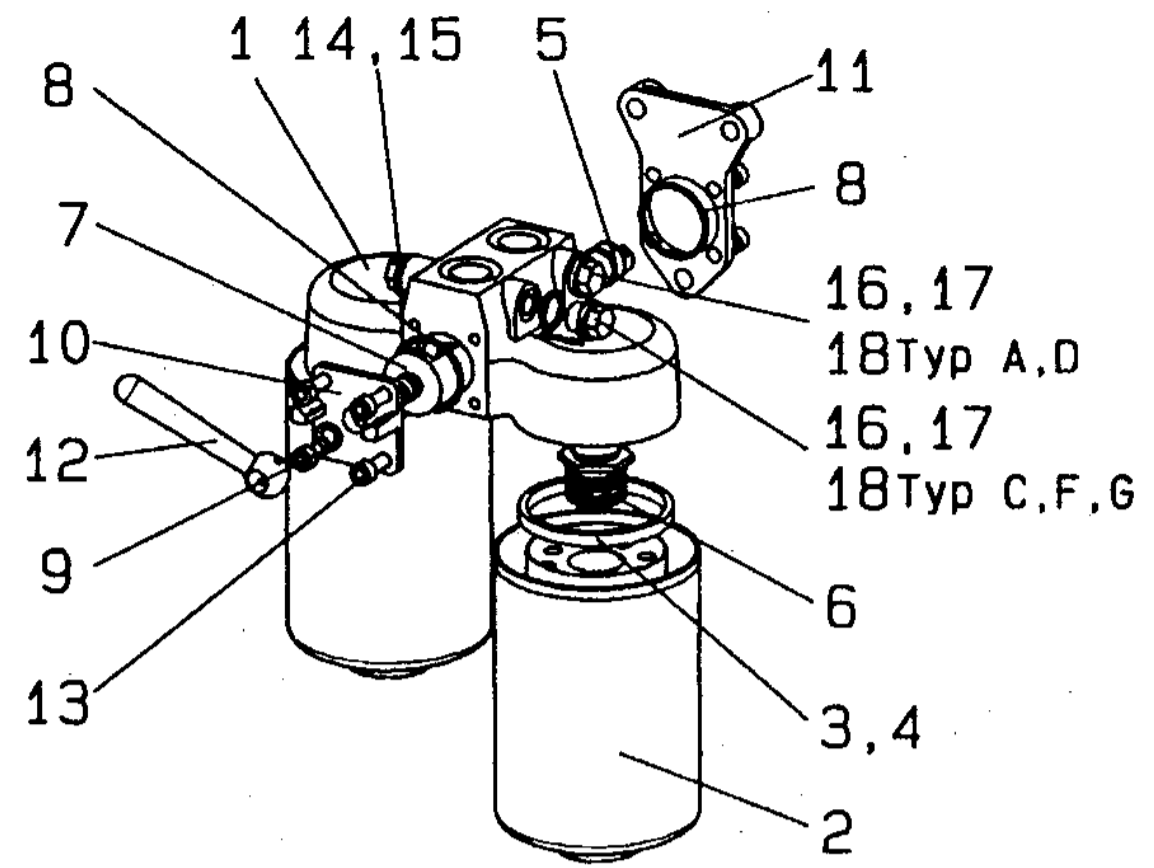
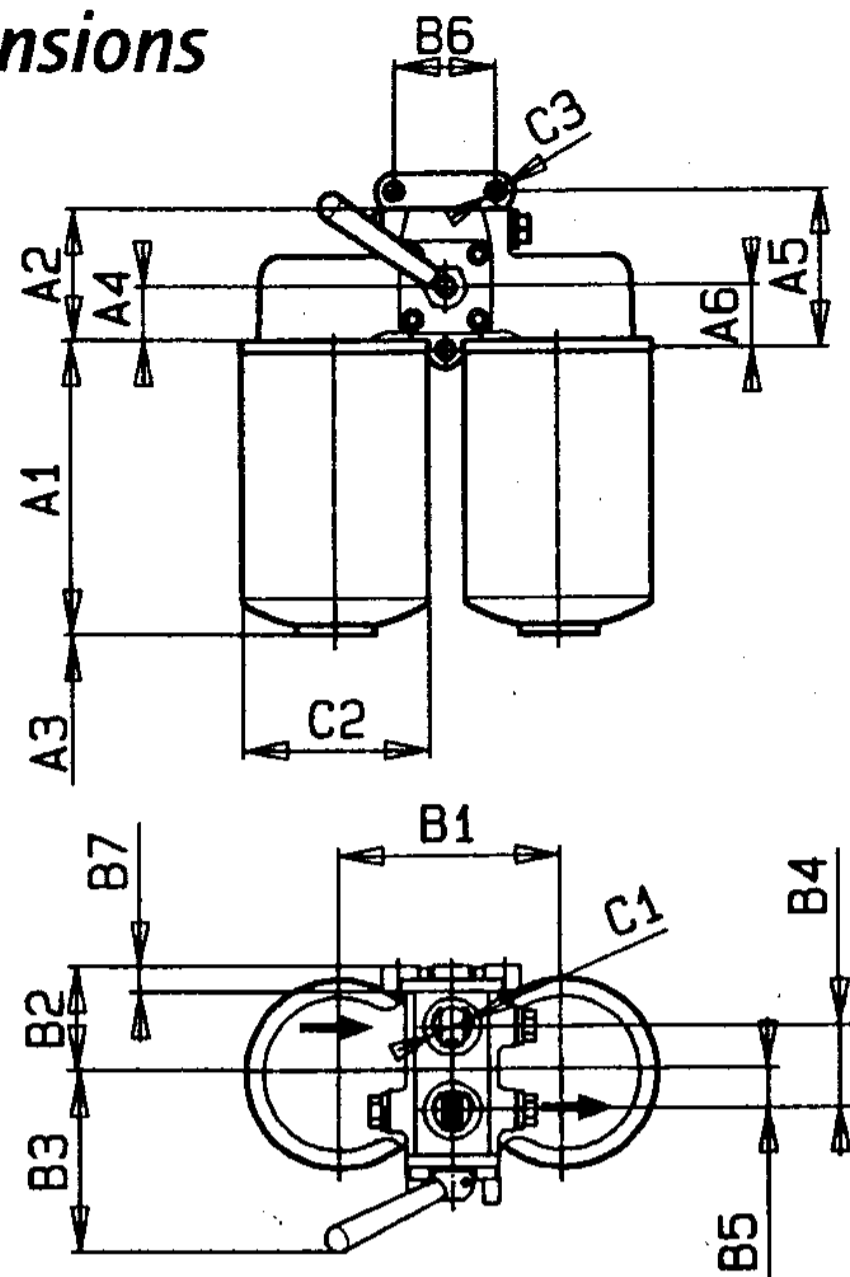
²⁾ = servicing height for spin-on filter

Spare Parts

				Size	7 SL 180	7 SL 260	7 SLS 180	7 SLS 260
Part	Quantity	Designation	Material					
1	1	Filter head	Al Si 12	please indicate ordering information "Filter Assembly", incl. return flow blockage valve				
2	2	Spin-on element	various	please indicate ordering information "Spin-On Element"				
3	2	O-ring	Buna-N/Viton	please indicate ordering information "Seal Kit"				
4	1	Bypass valve*	Al	Part No. 3049				
4.1	1	Plug	Steel	Part No. 793; for design without bypass valve				
5	2	Plug	Steel	Part No. 784				
6	2	Sealing ring	Buna-N/Viton	please indicate ordering information "Seal Kit"				
7	1	Maintenance indicator	various	please refer to ordering instruction "Maintenance Indicator"				
7.1	1	Reduction	Steel	Part No. 5309 (only for types A, D, H... and J...)				

* Please indicate opening pressure

Dimensions



Part 4 only for design
 7 SLD30/20
 7 SLD30/21
 7 SLD45/20
 7 SLD45/21

Type	Volume in ltrs	Weight in kg ²⁾	A1	A2	A3 ²⁾	A4	A5	A6	B1	B2	B3	B4	B5	B6	B7	C1	C2	C3	Spin-On Filter Connection															
7 SLD 30/20	2 x 0.5	2.1	95	65	15	27	78	31	110	53	86	41	23	50	13	G1/2	ø 92	ø 9	UNF 3/4"-16															
7 SLD 30/21																			G 3/4															
7 SLD 45/20	2 x 0.8	2.3	146																205	210	113	149	215	240	210	113	149	215	240	G1/2	ø 92	ø 9	UNF 3/4"-16	
7 SLD 45/21																																	G 3/4	
7 SLD 60/20	2 x 1.2	2.6	205																210	113	149	215	240	210	113	149	215	240	210	113	149	215	240	UNF 1"-12
7 SLD 60/21																																		G 3/4
25 SLD 60/20	2 x 1.4	2.7	210														210	113	149	215	240	210	113	149	215	240	210	113	149	215	240	UNF 1"-12		
50 SLD 30																																UNF 1 3/8"-12		
50 SLD 30 D	2 x 0.6	2.2	113														210	113	149	215	240	210	113	149	215	240	210	113	149	215	240	UNF 1 3/8"-12		
50 SLD 45 D																																UNF 1"-12		
50 SLD 45	2 x 0.9	2.5	149														210	113	149	215	240	210	113	149	215	240	210	113	149	215	240	UNF 1"-12		
50 SLD 60																																UNF 1 3/8"-12		
50 SLD 60 D	2 x 1.3	2.9	215														210	113	149	215	240	210	113	149	215	240	210	113	149	215	240	UNF 1 3/8"-12		
50 SLD 80 D																																UNF 1 3/8"-12		

¹⁾ = weight including standard-spin on filter element and maintenance indicator ²⁾ = servicing height for spin-on filter

Spare Parts

		Size	7 SL 30/20 7 SL 30/21	7 SLD 45/20 7 SLD 45/21	7 SLD 60/20 7 SLD 60/21	25 SLD 60/20	50 SLD 30 50 SLD 30 D	50 SLD 45 50 SLD 45 D	50 SLD 60 50 SLD 60 D	50 SLD 80 D
Part	Quantity	Designation	Material							
1	1	Filter head	Al Si 12							
			please indicate ordering information "Filter Assembly"							
2	2	Spin on element	various							
			please indicate ordering information "Spin-On Element"							
3	2	o-ring	Buna-N, Viton							
			please indicate ordering information "Seal Kit"							
4	2	Flat seal	Buna-N, Viton							
			please indicate ord. inf. "seal kit"							
5	1	Bypass valve*	various							
			Part No. 3046							
5.1	1	Plug	Steel							
			Part No. 792; for design without bypass valve							
6	2	Duplex fitting	Part No. 3284	Part No. 3285	Part No. 3285	Part No. 3285	Part No. 3285	Part No. 3285	Part No. 3287	Part No. 3287
7	1	Change-over valve	GGG 40							
			Part No. 3979							
8	2	o-ring	Buna-N, Viton							
			please indicate ordering information "Seal Kit"							
9	1	o-ring	Buna-N, Viton							
			please indicate ordering information "Seal Kit"							
10	1	Change-over valve plate	Al Si 12							
			Part No. 5761							
11	1	End plate	Al Si 12							
			Part No. 5762							
12	1	Lever	Steel							
			Part No. 3072							
13	8	Socket head cap screw	8.8							
			Part No. 634							
14	1	Plug	5.8							
			Part No. 770							
15	1	Sealing ring	Buna-N, Viton							
			please indicate ordering information "Seal Kit"							
16	1	Plug	5.8							
			Part No. 3187							
17	1	Sealing ring	Buna-N, Viton							
			please indicate ordering information "Seal Kit"							
18	1	Maintenance indicator	various							
			please refer to ordering instruction "Maintenance Indicator"							
18.1	1	Reduction	Steel							
			Part No. 5309 (only for types A and D)							

* Please indicate opening pressure



Industrial Filters · Accumulators

Installation, Starting and Maintenance

Filter Installation

Verify operating pressure with name plate information.

Mount the filter assembly using mounting device on the head (part 1) considering flow direction (direction arrows) and servicing height required for cleaning/replacing spin-on elements.

Remove dust protection plugs from filter inlet and outlet, screw filter in pipeline without tension stress.

Connection of electrical Maintenance Indicator

Connect indicator using the three wired cable.

Please verify electrical ratings on the indicators name plate.

Connection settings:

1. normally closed: 1 (black & white) + 3 (blue)
2. normally open: 1 (black & white) + 2 (brown)
3. changer: 1 (black & white) + 2 (brown) + 3 (blue)

Starting

Switch on system pump.

Maintenance

The filter element is clogged and needs to be replaced or cleaned if the visual indicator's red pin reaches its final position, if the visual indicators reaches the red alert range and/or the electrical switch is activated.

Spin-On Element Service

7 SLD..., 50 SLD...: Switch to filter out of use.

Switch off pump and depressurise system when other spin-on filter types are used.

Unscrew and replace spin-on element.

Use new seal/O-ring (part 3) of new spin-on element.

Screw spin-on elements 7 bar and 25 bar (7SL..., 7SLS..., 7SLD..., 25SL...) without using a tool.

The use of a mounting ribbon is recommended for screwing spin-on elements 50 bar (50SL..., 50SLD...). To prevent damage of tin vessel do not over stress spin-on filter when screwed on.

Operate filter as described above.

Quality and Standardisation

The development, manufacturing and assembly of EPE Industrial filters and filter elements is performed within the guidelines of a certified quality management system according to DIN EN ISO 9001.

The calculation of strength and the filter tests are done in compliance to actual pressure vessel regulations and national & international standards.

A filter inspection by accredited certification bodies (e. g. TÜV, GL, LRS, LRIS, ABS, BV, DNV, DRIRE, UDT etc.) is possible on request.

K. & H. Eppensteiner GmbH & Co. KG
Hardtwaldstraße 43 · 68775 Ketsch/Rhein
Postfach 1120 · 68768 Ketsch/Rhein
Telefon: 0 62 02 / 6 03-0
Telefax: 0 62 02 / 6 03-1 99
E-Mail: Eppensteiner@compuserve.com
Internet: www.Eppensteiner.de

Technical modifications reserved!